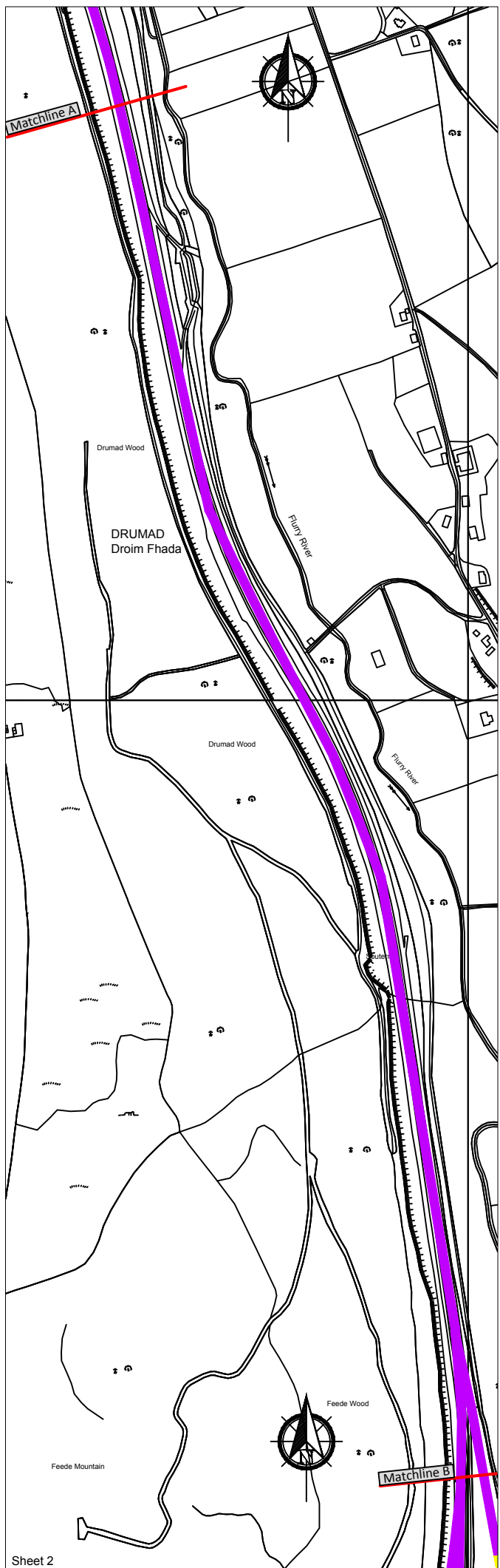
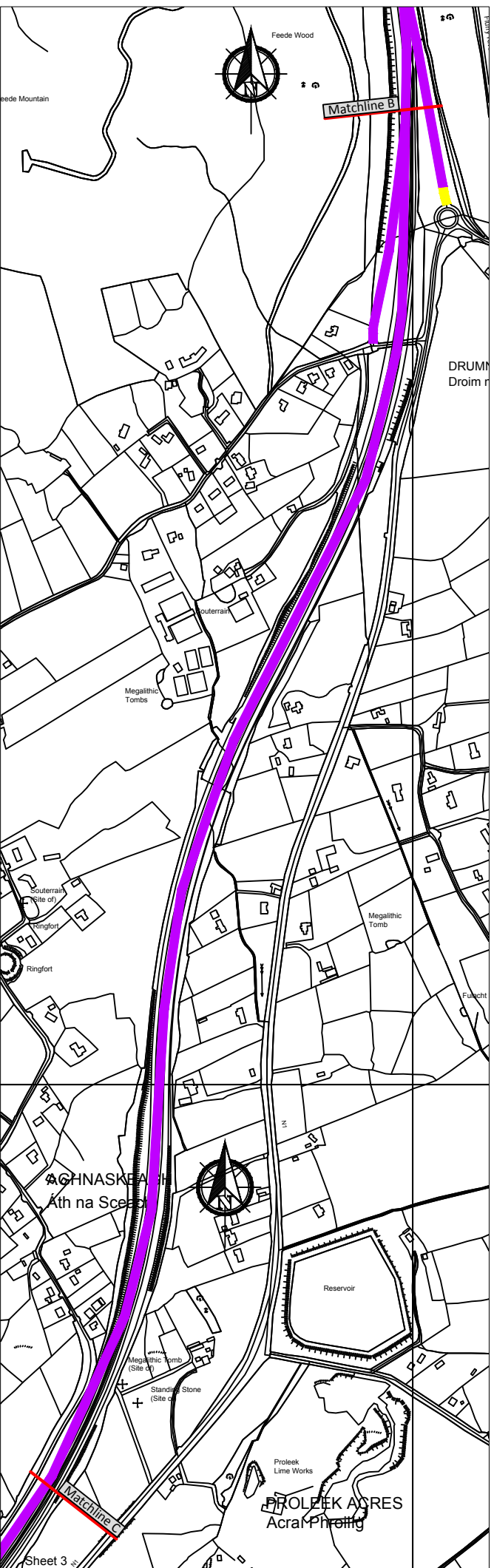


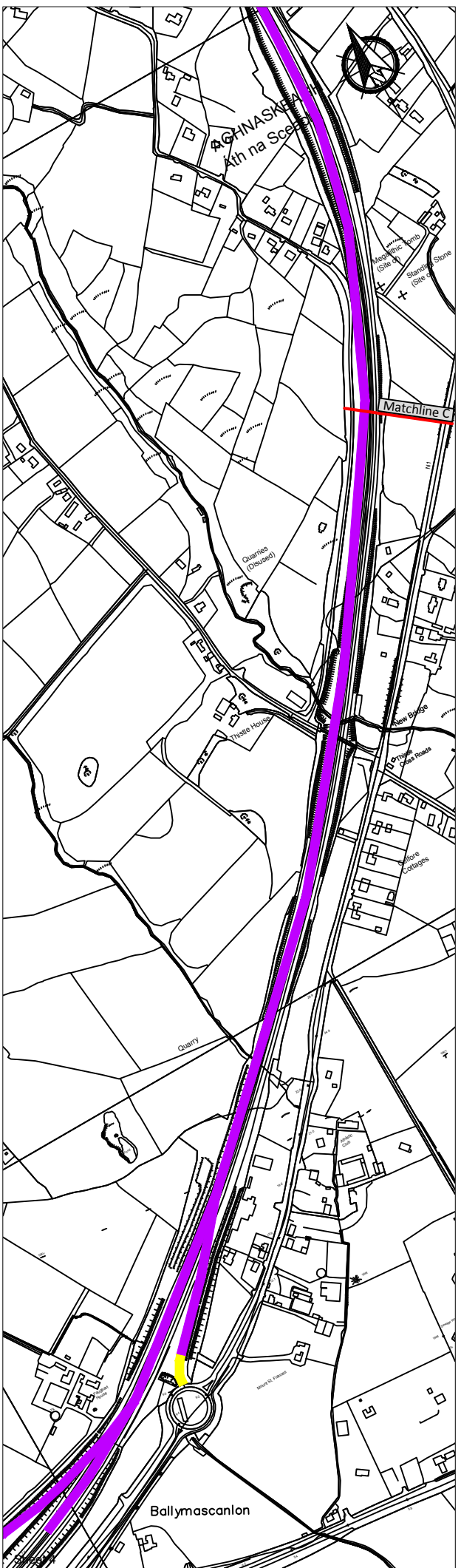
Sheet 1



Sheet 2



Sheet 3



Notes

- This drawing shows the Special Speed Limits applicable to the N1 National Primary Road within the County of Louth only.
- Refer to the County of Louth Road Traffic Special Speed Limit Bye-Laws 2018 for full schedule of countywide speed limits.

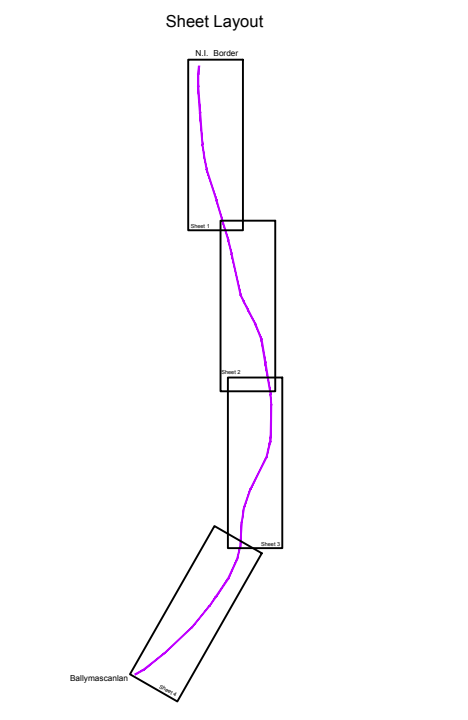
Default Speed Limits


- Motorway (M) - 120 km/h
- National Roads (N, NP, NS) - 100 km/h
- Regional Roads - 80 km/h
- Local Roads (LP, LS, LT) - 80 km/h
- Built-up Area - 50 km/h

(P - Primary, S - Secondary, T - Tertiary)

Legend

- 80km/h
- 120km/h





Comhairle Contae Lú
Louth County Council

Town Hall, Crowe St.,
Dundalk, County Louth
A91 W20C
Phone 042 93513150 (Infrastructure)

Statutory Speed Limits

Title:
N1 National Primary Road

Designed: J.K. Checked: R.F.
Drawn: R.F. Approved: C.D.

Date: August 2018 Drg. No.
Scale: NTS **SL-200-2018**

© Ordnance Survey Ireland. All rights reserved.
OSI Licence Number: 2011/30/CCMA/Louth County Council